



The Clyde

143m²



3



1



2

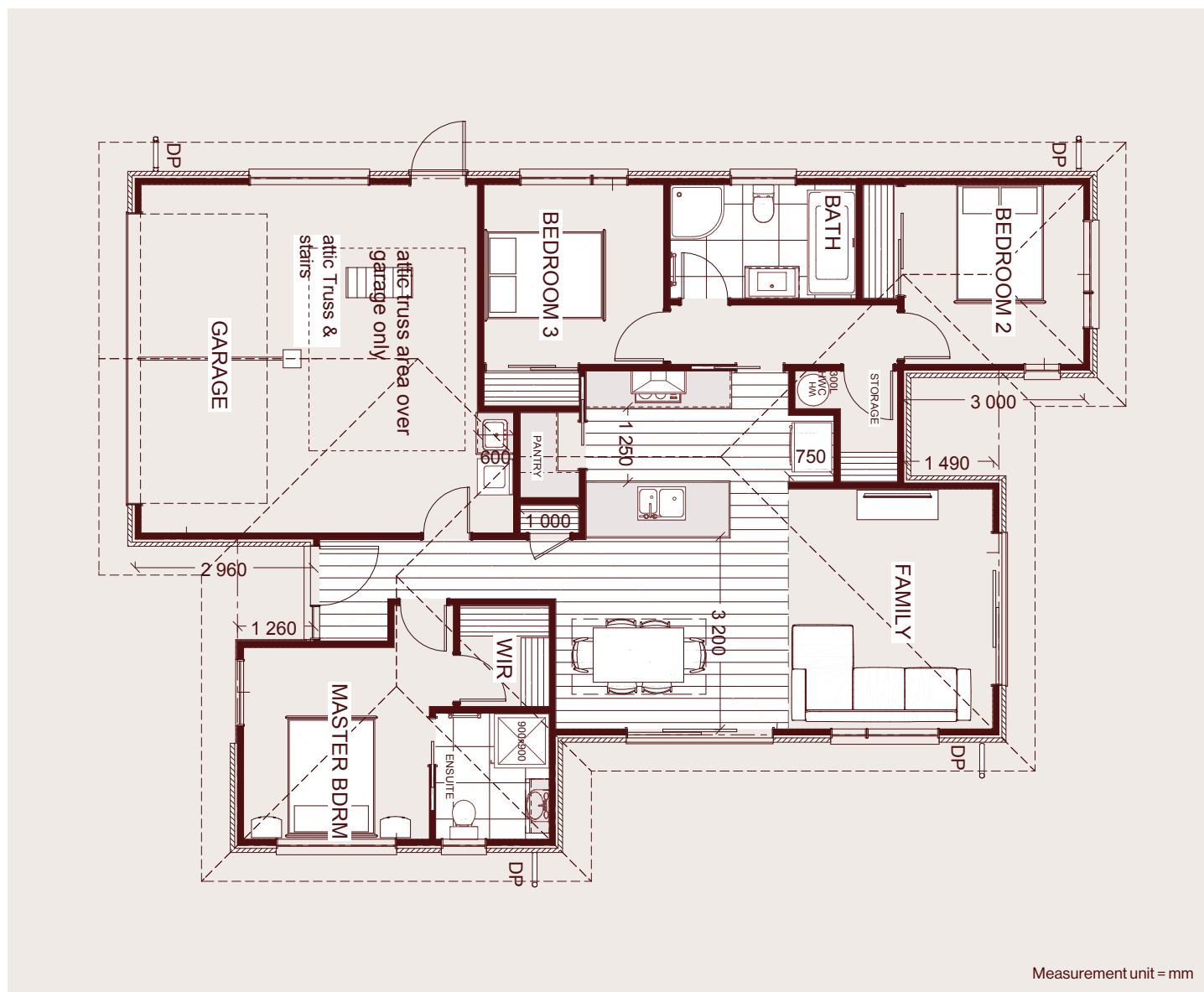


2

The Clyde is a smart, compact home designed for easy modern living, with no wasted space. The open-plan kitchen, dining, and family area creates a warm, central hub, complete with a handy pantry and seamless flow for everyday life.

Three well-proportioned bedrooms provide flexibility for families, guests, or a home office, with the master suite offering a private retreat featuring a walk-in wardrobe and ensuite. A double garage and practical storage complete this well-rounded, efficient home.





CORE SPECIFICATIONS

Brick with feature cladding

Laminate or tile flooring option

Bosch appliances

Stone benchtop + walk-in pantry

Quality bathroom fixtures

Freestanding bath

Heat Pump (in living area)

Attic storage and ladder

Built-in joinery to all wardrobes

Digital front door lock

70m² plain concrete and driveway crossing

10 year Master Builders Guarantee

12 months maintenance period