



Render Indicative only.

Greystone

176m²



3



2



2

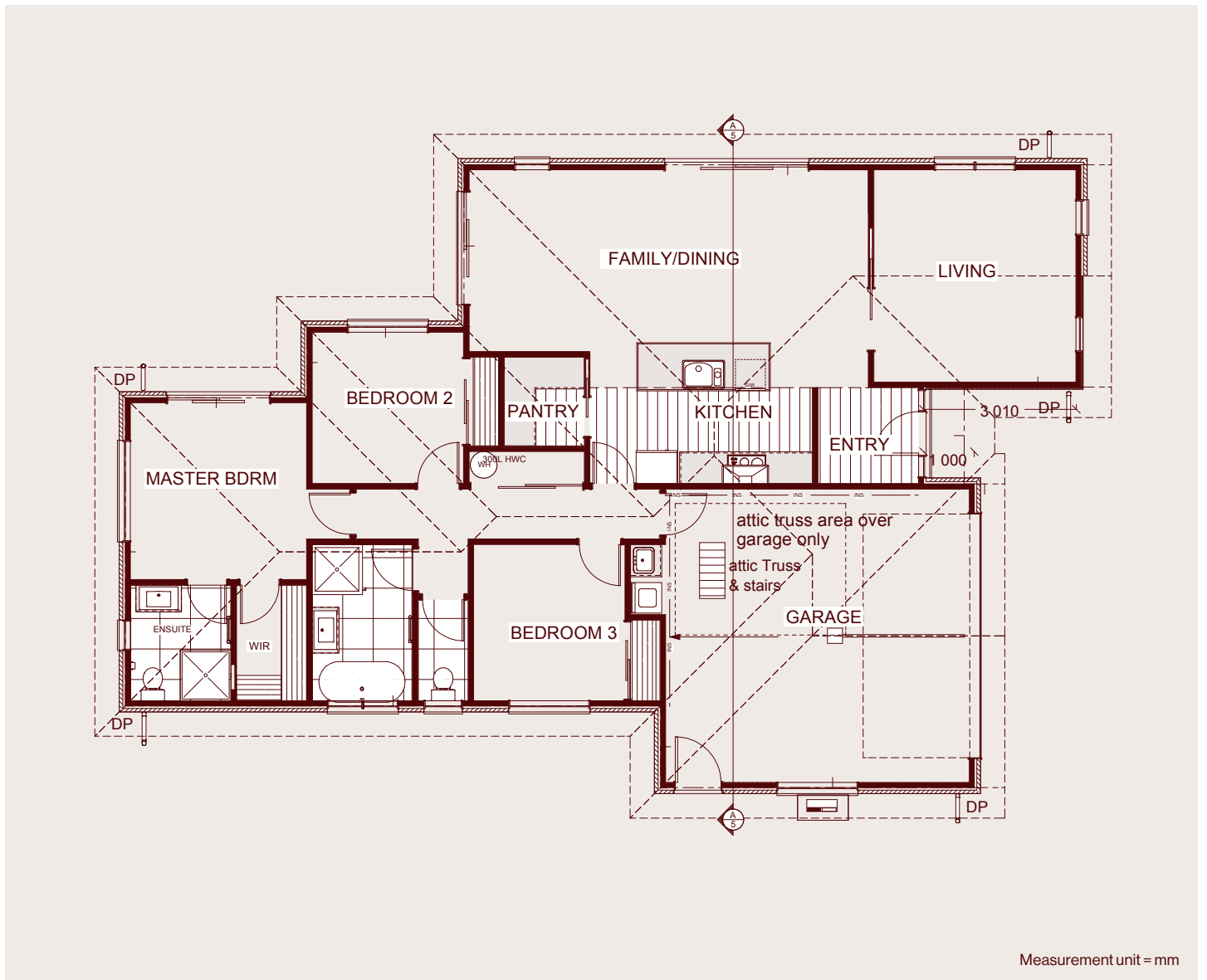


2



Greystone is a well-balanced home designed for everyday living, offering the perfect blend of open space and separation. The light-filled kitchen, dining, and living area form the central hub, complete with a walk-in pantry and easy indoor-outdoor flow, while a separate lounge provides a quiet retreat or kids' rumpus.

Three comfortable bedrooms are thoughtfully positioned, including a private master suite with walk-in wardrobe and ensuite. A centrally located main bathroom with separate W/C, ample storage, and a double garage complete this practical layout, making Greystone an ideal choice for homeowners wanting space, flexibility, and everyday comfort.



CORE SPECIFICATIONS

Brick with feature cladding

Laminate or tile flooring option

Bosch appliances

Stone benchtop + walk-in pantry

Quality bathroom fixtures

Freestanding bath

Heat Pump (in living area)

Attic storage and ladder

Built-in joinery to all wardrobes

Digital front door lock

70m² plain concrete and driveway crossing

10 year Master Builders Guarantee

12 months maintenance period